

HELIOSHADE®

MOTORISED EXTERNAL VENETIANS





HELIOSHADE®

MOTORISED EXTERNAL VENETIANS

Design daylight with the **Helioshade®** external venetian range. It's the advanced external venetian blind system that provides optimal heat protection and unsurpassed light control. Perfect for domestic or commercial environments, the slats let in natural sunlight whilst minimising uncomfortable hothouse effects and eliminating blinding glare.

Featuring a range of stylish 70/80/90mm curved and flat slats with baked enamel finish offering options such as rolled edges to provide extra stability/anti vibration, **Helioshade®** external venetians suit any external façade and come in a range of modern designer colours and can be controlled by switch, hand held remote control or automated building management systems.

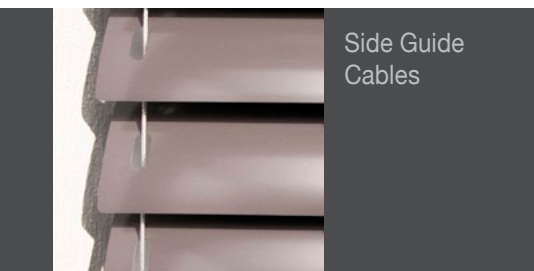
The elegant slats can be set to any position by raising, lowering and tilting to allow room temperature and light level to be perfectly matched to user requirements. When fully retracted the system provides a completely unobstructed view.

Unaffected by extreme temperature changes, **Helioshade®** external venetians reduce the sun's penetration by up to 90% providing air conditioning cost efficiencies. Whether you are an architect looking for a solution to help attain a Green Star™ rating for an office block or you're conscious about your own needs in the home – the **Helioshade®** external venetian range has your environmental concerns covered. Its offers a practical and robust intelligent sun control solution – satisfying the most ambitious design demands of modern architecture.

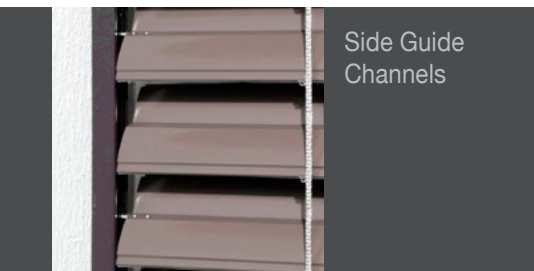


GUIDING OPTIONS

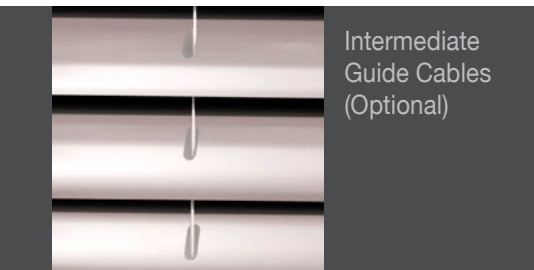
- Stainless steel cable guiding – sheathed in PVC for added anti-corrosion and noise reduction
- Extruded aluminium side channel with noise reducing lining
- Adjustable fixing brackets to suit a range of applications
- Optional reveal fixing, recessed, self-supporting, coupled and circular side channel options also available.



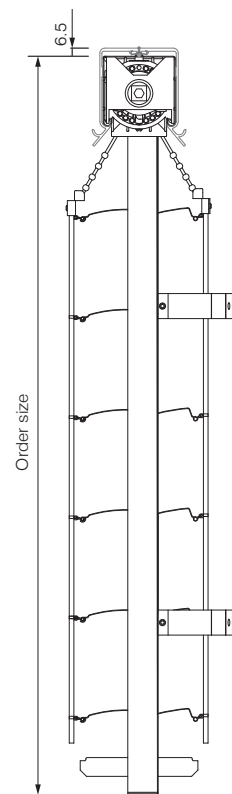
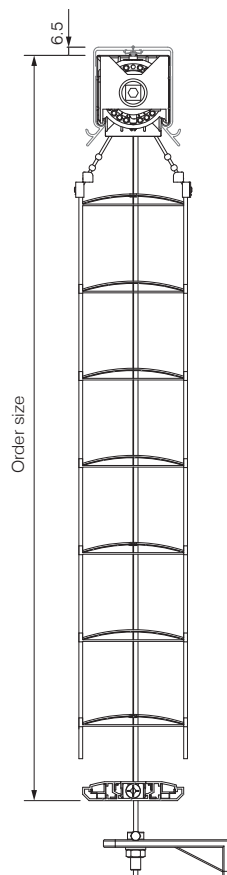
Side Guide Cables



Side Guide Channels



Intermediate Guide Cables (Optional)



THE HELIOSCREEN DIFFERENCE

- Automated wind/sun/rain-sensing controls to tilt and retract blinds when needed
- UV resistant components, lifting tapes and ladder cords for extended life in exposed environments
- Extruded aluminium base rail profile for increased stiffness and rail weight
- Extensive range of slats to suit every application for both commercial and domestic
- Precision extruded drive shaft for fine tilt control
- Direct drive motor for increased performance and reliability
- High grade stainless steel fixtures suitable for coastal environments
- Optional extruded aluminium pelmets powder coated in a range of colours.

FEATURES

- Width 700-4000mm
- Maximum drop 5000mm
- Available in a range of colours
- Motorised operation
- Remote control option
- Automatic control with optional sun and wind sensor.

CONTROL

At **Helioscreen** we utilise the latest automation technology, including fully integrated façade management systems that react automatically to the elements. Blinds can be operated simply with a wall switch, a touch panel, or using a remote control with optional sensors also available. **Helioscreen** external venetian systems are suitable for both commercial and domestic applications and come with quality and performance warranties.



SLAT COLOURS

	VSR 140 Silver
	VSR 907 Grey Aluminium
	DB 703 Metal Grey
	VSR 7016 Anthracite
	VSR 130 Grey
	VSR 904 Light Grey
	VSR 010 White
	VSR 1013 Pearl White
	VSR 240 Light Beige
	VSR 780 Bronze
	VSR 071 Dark Brown
	VSR 330 Purple Red
	VSR 220 Moss Green
	VSR 9005 Black (C80 slat only)



HELIOSHADE®

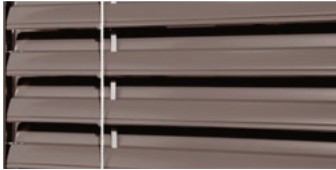
EXTERNAL VENETIANS – SLAT SELECTION CHART



C Slats
80mm

Dual integrated beaded slat edges for perfect alignment and optimum performance with stylish curved visual finish when in use.

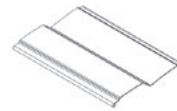
Slat tilting range of 160°



Z Slats
70 & 90mm

Offers increased light dimming thanks to overlapping closure of slats which have integrated dampening lip rolled in to the leading edge.

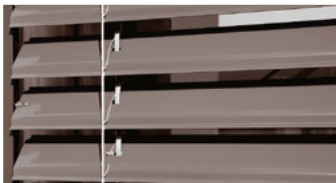
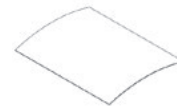
Slat tilting range of 90°



F Slats
80mm

Highly flexible flat slat offers a streamline external view when down combined with a compact slat stack when retracted.

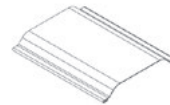
Slat tilting range of 160°



T Slats
80mm

Are the perfect solution for modern architecture, offering linear symmetry with clean lines and reduces stacking height.

Slat tilting range of 160°



HELIOSCREEN'S OUTDOOR RANGE

90% Reduced Heat Radiation Windsensor Retractor

5 Year Warranty Powered by Somfy 5-year Motor Warranty

External Screens, Awnings, External Venetians, and Retractable Roof Systems

Helioscreen Australia Pty Ltd – Dealers Australia Wide

www.helioscreen.com.au | enquiries@helioscreen.com.au | Phone 1300 766 319



Scan QR code for more info

 **helioscreen**
Intelligent Sun Control Solutions®